

PART OF WEST 1/2 OF SEC. 24 T.5N., R.1W., S.L.B. & M.
EASTWOOD SUBDIVISION NO. 10

LOTS 1-6, 30-35

IN WEBER COUNTY

SCALE 1"=100'

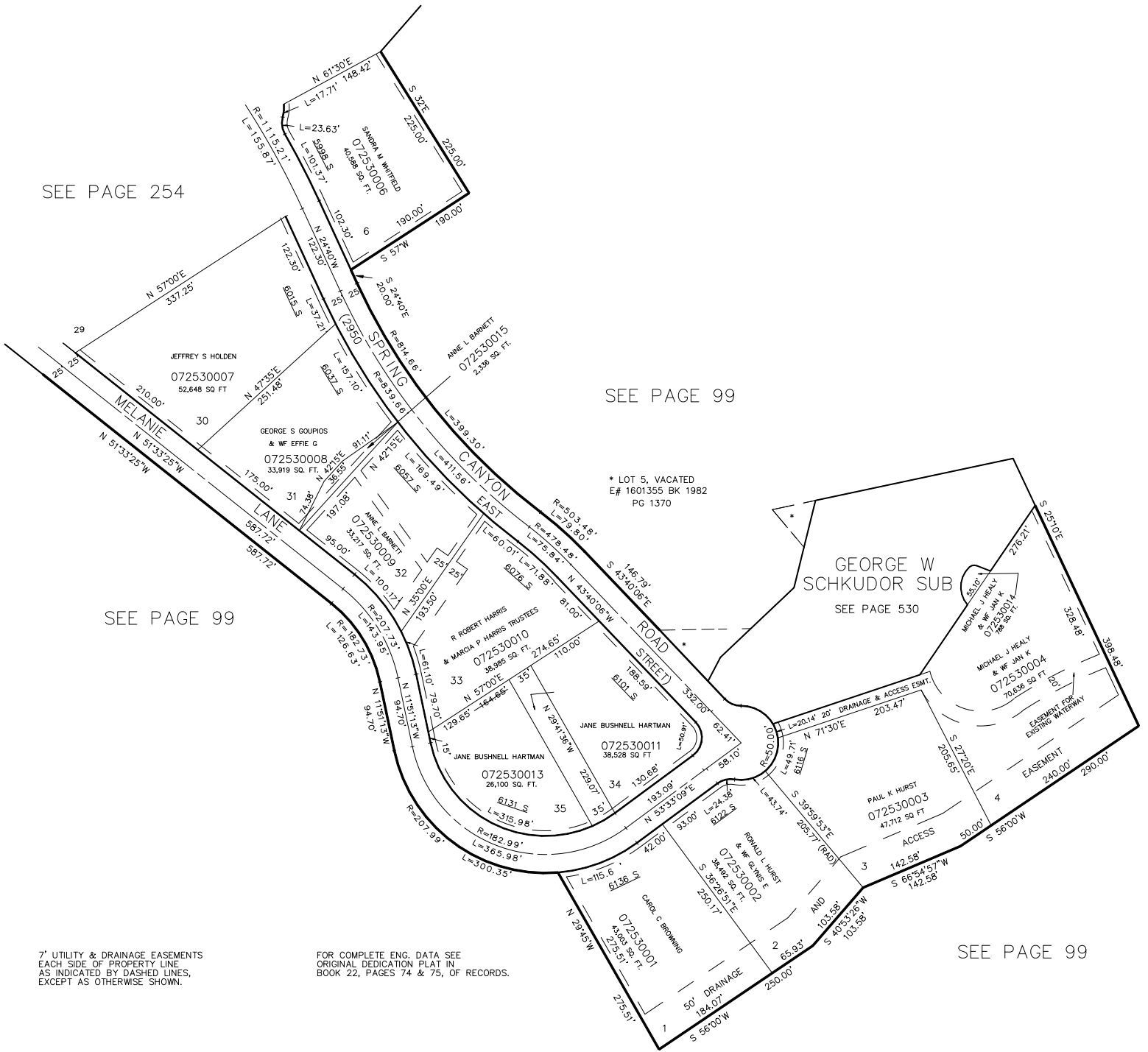
TAXING UNIT : 159

SEE PAGE 254

SEE PAGE 99

SEE PAGE 99

SEE PAGE 99



7' UTILITY & DRAINAGE EASEMENTS
 EACH SIDE OF PROPERTY LINE
 AS INDICATED BY DASHED LINES,
 EXCEPT AS OTHERWISE SHOWN.

FOR COMPLETE ENG. DATA SEE
 ORIGINAL DEDICATION PLAT IN
 BOOK 22, PAGES 74 & 75, OF RECORDS.